



# HÔTEL-DIEU CHAPEL LYON, FRANCE



The project of the conversion of the Grand Hôtel-Dieu by Eiffage

## Make a donation - Become a Patron:

**Donations by check\*:** made payable to the "Fondation du Patrimoine - Chapelle de l'Hôtel-Dieu" - Fondation du Patrimoine, Fort de Vaise, 27 bd St Exupéry, 69009 Lyon - France.

**Online donations:** [www.fondation-patrimoine.org/1572](http://www.fondation-patrimoine.org/1572)

Contact: Mélanie Prévost [melanie.prevast@fondation-patrimoine.org](mailto:melanie.prevast@fondation-patrimoine.org) / 04.37.50.35.78

\*Tax receipt made to the name and address written on the check



## Tax deductions in France:

**Income tax (IRPP):** 66% of the donation, within the limit of 20% of taxable income

**Wealth tax (ISF):** 75% of the donation, within the limit of 50 000 €

**Corporations:** 60% of the donation, within the limit of 5% of net sales ex-Tax

Join this document with your check: [www.chu-lyon.fr/web/File/27122](http://www.chu-lyon.fr/web/File/27122)

## Counterparties:

Mention on the web page of the Chapel, communication materials, on the patrons wall - Private guided tour of the Chapel and its restoration - Nameplate placed in the Chapel - Invitations to openings...

> up to 25% of the donation <

## Project manager:

**SERGUEÏ PIOTROVITCH D'ORLIK**

Mission Culture & Patrimoine des HCL  
3 quai des Célestins, 69229 Lyon Cedex 2  
07.89.87.01.85 / 04.72.40.75.74

[serguei.piotrovitch-dorlik@chu-lyon.fr](mailto:serguei.piotrovitch-dorlik@chu-lyon.fr) or [chapelle.hotel-dieu@chu-lyon.fr](mailto:chapelle.hotel-dieu@chu-lyon.fr)

## Architect:

**DIDIER REPELLIN**

Chief Architect for Historic Monuments

## Partners:

The **Fondation du Patrimoine**, since 2008, helps mobilize corporate and private patronage.

> Contact: Mélanie Prévost [melanie.prevast@fondation-patrimoine.org](mailto:melanie.prevast@fondation-patrimoine.org)

The **Association de la Chapelle du Grand Hostel-Dieu de Lyon**, since 2015: participates in the cultural enhancement of the chapel, helps finance restoration.

> Contact: Suzanne Marchand, president [asso.chapelle.ghd@gmail.com](mailto:asso.chapelle.ghd@gmail.com)



## SUPPORT A MAJOR RESTORATION OF AN EXCEPTIONAL PLACE



## SUPPORT AN ÉDIFICE OPENING ON TO THE CITY AND HÔTEL-DIEU DE LYON...

### 1637-1655: Construction

- **1637:** Beginning by the choir. The architecture is part of the Counter-Reformation.
- **1638-1641:** Plague : death of the companions and the architect G. Ducellet. C. Chana and S. Le Rupt succeeded him
- **1645:** Consecration on the 6<sup>th</sup> of January
- **1655:** Completion of the facade

### Revolution

- **Transformed** into a saltpeter depository, its main works are destroyed. Only the *Madonna and Child* by J. Mimerel and the *Mater Dolorosa* by T. Blanchet will be found
- **August 1793:** As the Hôtel-Dieu is bombarded, the Chapel is a refuge for parturients

### 19<sup>th</sup> century : First restoration

- **1802:** Creation of the Hospices Civils de Lyon
- **1803-1809:** Attribution of the pulpit. Paintings of the choir
- **1806:** Rededication
- **1847:** The great reliquary is given by the Cardinal de Bonald
- **From 1848 onwards:** Sculptures by J.-H. Fabisch and C. Dufraigne
- **1852:** The organ is constructed by A. Zeiger
- **1866-1868:** Mural paintings by A. Denuelle, paintings by A. Sublet et J.-B. Chatigny

### 20<sup>th</sup> century: From apathy to acknowledgment

- **1908:** Destruction project of the Hôtel-Dieu
- **1934:** Destruction of the Charity Hospital
- **1941:** The Chapel is classified as a historical monument
- **Sept. 1944:** Burning of the great dome. The Chapel shelters parturients

### 21<sup>st</sup> century: Second restoration

- **2007:** Prior studies
- **2009:** D. Repellin is entrusted the chief project architect
- **2012:** 1<sup>st</sup> phase: chapel of the Virgin, *Madonna and Child* by Mimerel, pulpit, paintings, stain glass windows
- **2013:** 2<sup>nd</sup> phase: St. John the Baptist's chapel, containing the baptismal font
- **2014-2015:** 3<sup>rd</sup> phase: St. Joseph's chapel, Sacred Heart chapel and south transept

More informations : [www.chu-lyon.fr/web/4263](http://www.chu-lyon.fr/web/4263)



...BECOME A PATRON OF THE HÔTEL-DIEU CHAPEL !

### An ambitious restoration of interiors:

The architecture of the seventeenth century, after the Counter-Reformation, is adapted to hospital. Since 1868, the architectural well-integrated neo-baroque decoration of the famous parisian decorator Alexandre Denuelle gives the chapel its artistic identity. This decoration is hid by a thick layer of dust.

### Hôtel-Dieu de Lyon:

Hôtel-Dieu de Lyon was the main hospital in the City, first erected in medieval times and in which the great Humanist François Rabelais was a doctor.

The chapel was built close to the first massive expansion (1622), before Soufflot constructed the grandiose wings and courts and dome along the Rhône river (1741-1761).

The building ceased to function as a hospital in 2010, and the Hospices Civils de Lyon signed a long lease with Eiffage to reconvert it. From 2018, the Grand Hôtel-Dieu will host the City of Gastronomy, restaurants, a luxury hotel, workspaces, recreational areas and housing. Its courts and gardens will be opened for promenades.

### The chapel and the Hôtel-Dieu:

The chapel is part of the iconic architecture of the Hôtel-Dieu. Nevertheless, the two projects are separated and the restoration of the chapel is leaded by the Hospices Civils de Lyon (University Hospital).

Restoration allows to rediscover a masterpiece, who will be situated at the heart of a new heritage center in Lyon, at the entrance of the Grand Hôtel-Dieu. The chapel will be a place for cultural events (concerts, conferences...) and open for worship (convention signed with the Diocesan Association of Lyon).

### Become a Patron:

The Hospices Civils de Lyon appeal to the patronage to restore the chapel. Patronage may take the form of a cash donation, devises, the provision of skills (know-how or services), or a donation in kind (products manufactured by the company and directly usable by the institution).

Donations may be assigned to specific items. Counterparties are determined together within the limit of 25% of the domnation. Tax deductions for individuals and companies allow to reduce taxes from 60% to 75% (only available in France).



THEY SUPPORT THE CHAPEL



2012-2016

CHAPEL OF VIRGIN MARY

ST. JOSEPH'S CHAPEL

SACRED HEART CHAPEL

ST. JOHN THE BAPTIST'S CHAPEL

SOUTH TRANSEPT

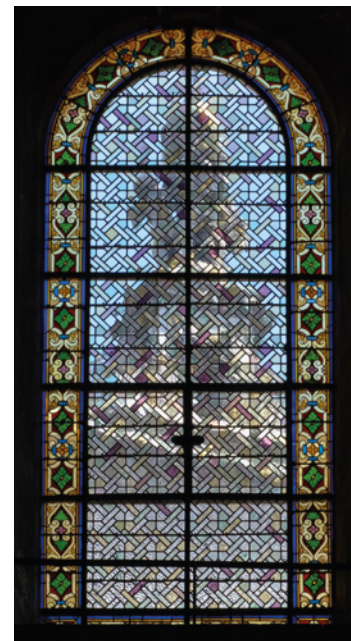
MIMEREL'S VIRGIN AND CHILD

PULPIT

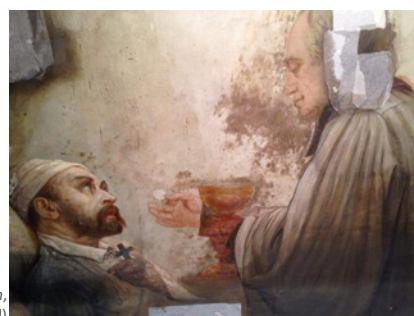
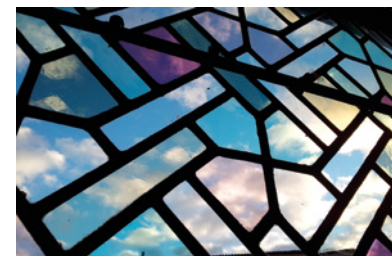
STAINED GLASS, PAINTINGS



J. Mimerel, *Virgin and Child*, c. 1659



The baptismal font, in St. John the Baptist's chapel



J.-B. Chatigny, *The Communion or the Happy Death*, 1868, mural painting (details, being cleaned)



T. Blanchet, *Mater Dolorosa*, c. 1655, oil on canvas, 251x170 cm



G. Serangeli, *Crucifixion*, 1806

# 2016 AND BEYOND

NAVE AND CHOIR

CHAPEL OF RELICS

ST. MAGDALENE CHAPEL

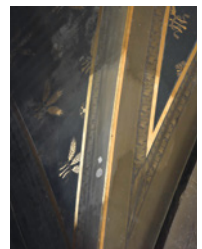
OUR LADY OF MERCY CHAPEL

NORTH TRANSEPT

ACCESS CHAPEL

GREAT RELIQUARY

ORGAN, SACRISTY



Chapel, 18<sup>th</sup> century, sacristy upstairs

**GLOBAL COST (INTERIOR): 8 000 000 €**  
**STILL NEEDED: AROUND 6 000 000 €**

